



**LILAC: Low Impact Living Affordable Community**



# **LILAC: Building Community**

**Joe Atkinson**



## **LILAC: Low Impact Living Affordable Community**

- Overview of LILAC
- Low Impact
- Affordable
- Community
- Latest news
- An invitation

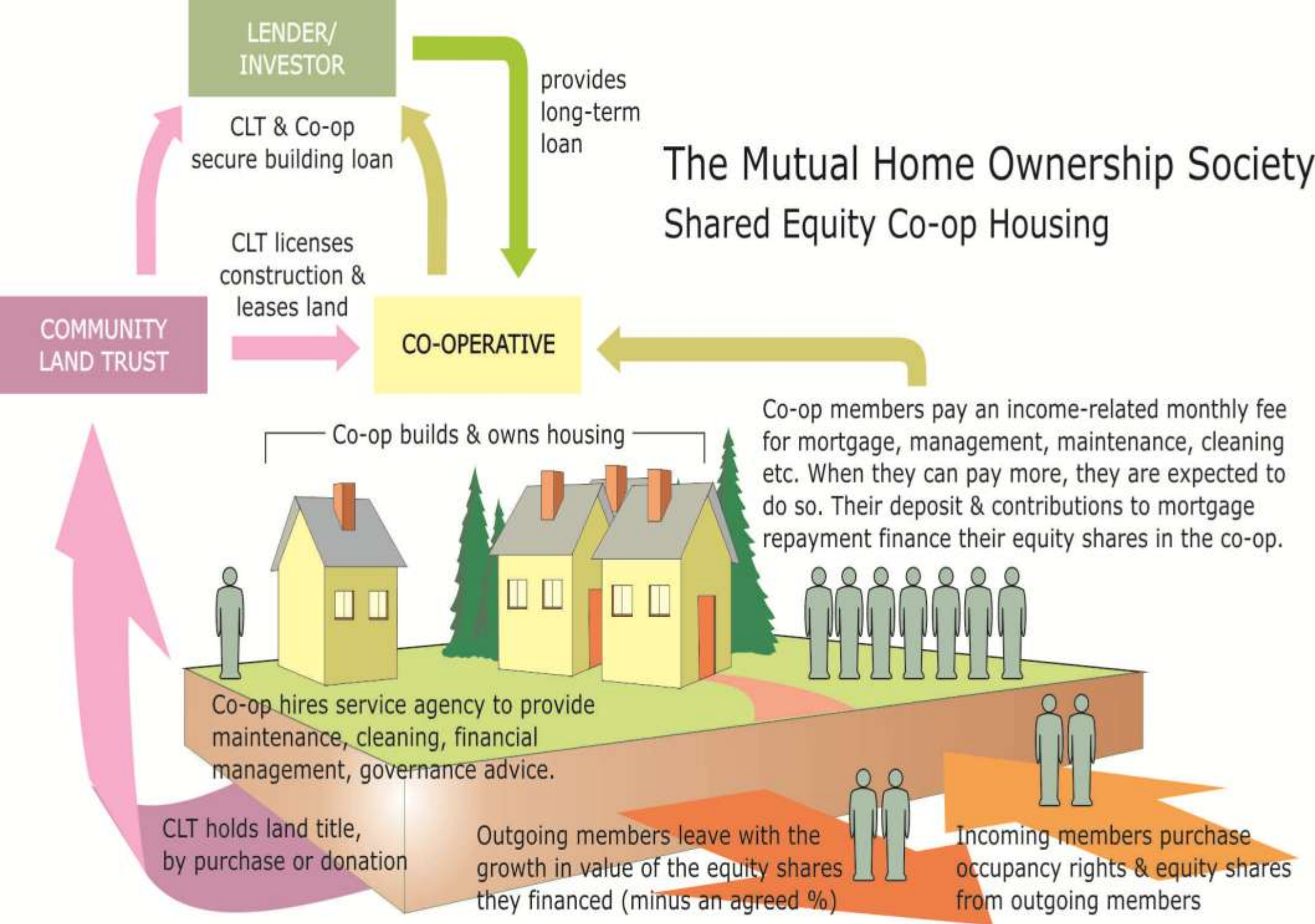


**Low Impact**





**Affordable**





**Community**

**GREEN AREA WITH DAY TIME PUBLIC ACCESS**

Gate for public access during day time hours

**PRODUCTIVE GARDENS**  
(5 plots are available for the local community)

15 garden plots (45 sqm each)

Garden gate to restrict public access to the private area of the project

Victoria Park Grove Flats

Recycling & waste storage facility  
Houses 1, 6A, 6B, 6C, 7A, 7B, 7C, 8, 9, 10, 11, 12, 13

LANCASTRE GROVE

Vehicular access to a private drive serving 5 car park units and an emergency access

Pillar to be moved to improve visibility

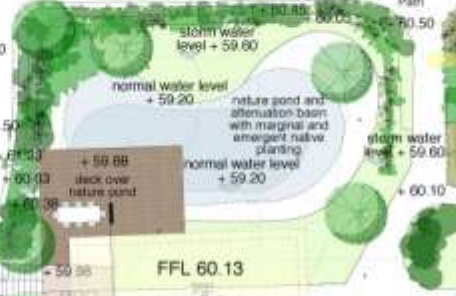
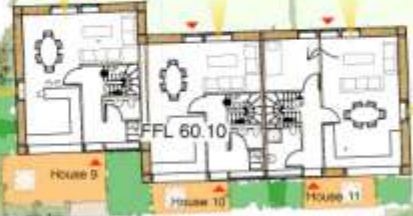
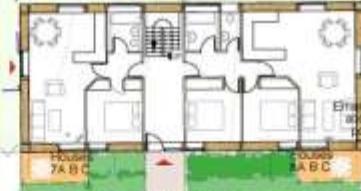
Sections of railings to be removed to improve visibility

KORSTALL MOUNT

**PRIVATE PLAYING AREA**

Private gardens block No.3

Private gardens block No.3



Recycling and waste storage facility  
Houses 2, 3, 4A, 4B, 4C, 5A, 5B, 5C

Gate to restrict public access to the private areas of the scheme

Pillar to be removed to improve visibility

Retaining wall and railing to be retained

Bicycle rack for visitors

Bicycle shelter (12 units)

Bicycle shelter (20 units)

Existing railing to be retained

Existing railing to be retained

Vehicular access to a private drive

Sections of railings to be removed to improve visibility

Main pedestrian access









**Latest News**

- Move to Leeds!
- Become a friend of LILAC – only £5
- Invest in Loanstock
- Want to set up your own?

Come to “Learning from LILAC” day: 10<sup>th</sup> May,  
Leeds University: Email [learning@lilac.coop](mailto:learning@lilac.coop)

Website: [www.lilac.coop](http://www.lilac.coop)

