




Daniel Viliesid
Sustainability Integrator
1st March 2008


© BioRegionalQuintain



One Planet Living® and One Brighton



- BioRegional Quintain
- Development Portfolio
- One Planet Living
- One Planet Living in action
- Q&A

© BioRegionalQuintain



- Harness the reputations, expertise, vision and commitment of BioRegional and Quintain
- Create sustainable communities across the UK
- Aim to be delivering 750 new homes per year by 2010
- Focus on enabling and supporting sustainable lifestyles
- Deliver in the mainstream
- Commitment to the One Planet Living approach

© BioRegionalQuintain

- BioRegional Quintain in Joint Venture with Crest Nicholson
 - One Brighton, Brighton
 - West Molesey, Surrey
 - One Gallions, East London
 - One Rochester Riverside, Rochester

© BioRegionalQuintain



- BioRegional Quintain is developing the largest Zero Carbon development in the UK:
 - Riverside One at Middlehaven, Middlesbrough

© BioRegionalQuintain

Origins of Ecological Foot-printing

- Human consumption - food, materials & energy can be converted in areas of biologically active land required to produce them

Examples: per annum

- 25 hectares of fishing grounds / tonne of fish
- 1.3 hectares of forest / m3 timber
- 0.35 hectares forest / tonne CO2 from fossil fuels

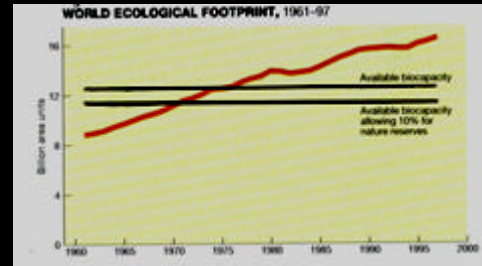
© BioRegionalQuintain

Planet Earth's Productive Capacity

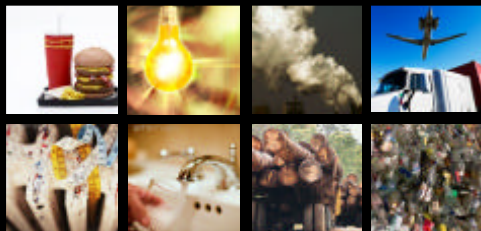
Cropland	1.3	billion hectares
Grazing Land	4.6	billion hectares
Forest	3.3	billion hectares
Fishing Grounds	3.2	billion hectares
Built up areas	0.2	billion hectares

TOTAL	12.6	billion hectares

© BioRegional/Quintan



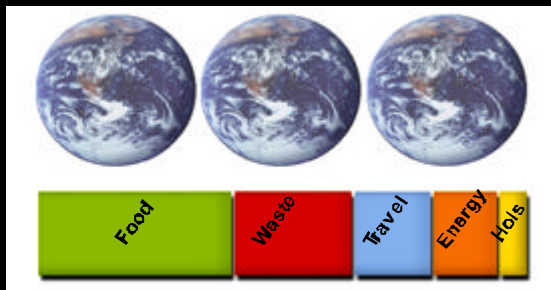
© BioRegional/Quintan



© BioRegional/Quintan



© BioRegional/Quintan

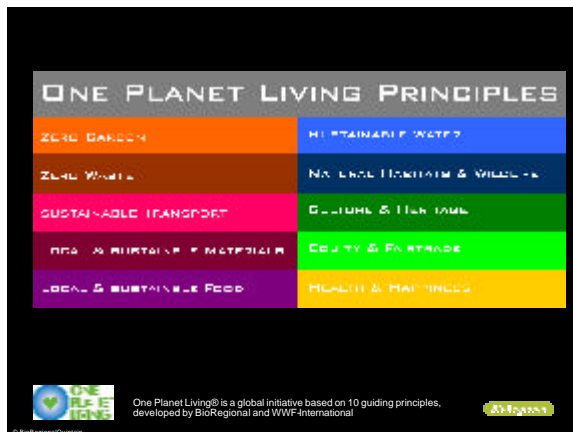


How many Earths would we need to sustain our lifestyle?

© BioRegional/Quintan






© BioRegional/Quintan



Zero Carbon

- Reducing demand
- Renewable energy supply
 - On - site
 - Biomass boiler
 - PV panels
 - Roof wind-turbines
 - Off - site
- Ongoing Management
 - ESCo (Energy Services Company)

Zero Waste

- Best practice SWMP
- Recycling targets during construction
- Internal/external divided bin provision
- On-site 'in vessel' composting to close loop






Sustainable Transport

- Alternatives to use of private car
- Promoting sustainable transport
 - Cycle storage
 - Secure storage (construction tools & equipment) and changing facilities
 - Walking & Cycling routes info and maps






Local & Sustainable Materials

- Healthy and non-toxic
- Responsible Sourcing
- Local
- Recycled and Reclaimed (e.g. concrete frame)
- NBT Clay Block system
- Lean Manufacturing principles



© BioRegional/Quintan

Local & Sustainable Food

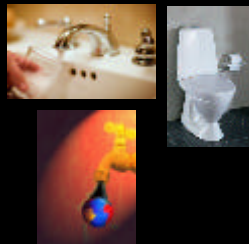
- On-site food growing
- Links with local initiatives (farmers, farmers markets, allotments)
- Fresh, local and organic food offered in canteen and community centre



© BioRegional/Quintan

Sustainable Water

- Water consumption in-line with EcoHomes 'Excellent'
 - Aerated taps & shower heads
 - Low dual-flush toilets
 - Efficient appliances
- Information available to encourage reduction in demand
- Rain-water harvesting for irrigation of allotments



© BioRegional/Quintan

Natural Habitats & Wildlife

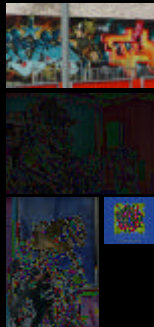
- Accredited ecologist advice
- Green walls
- Brown roofs
- Bat and bird nesting boxes
- Sky gardens



© BioRegional/Quintan

Culture & Heritage

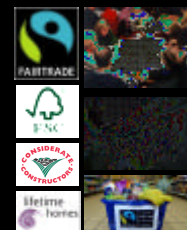
- Community facilities
- Community extranet
- Events programme
- Dissemination of 'Culture of Sustainability'
- Green Lifestyles Packs



© BioRegional/Quintan

Equity & Fairtrade

- Equal opportunities
- Fair Trade products in canteen and offices
- Apprenticeship programmes
- OPL Construction Plan
- OPL Plan for Brighton
- Local labour support
- Selection of contractors and suppliers to support local supply chain
- Links to local schools

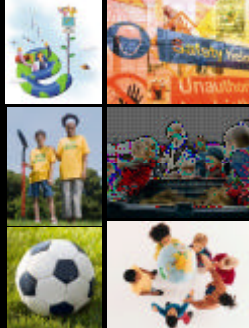


© BioRegional/Quintan

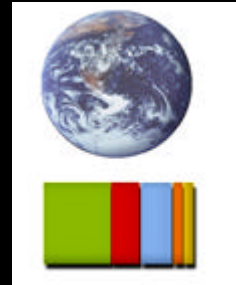
Brighton & Hove Fairtrade City

Health & Happiness

- Non-toxic materials
- Good air quality
- Governance organisation
- Best practice H&S programme on-site
- Healthy lifestyles programmes
- Clean, safe and healthy working conditions on-site
- Creating communities which enable people to make sustainable lifestyle choices - easy, affordable and attractive



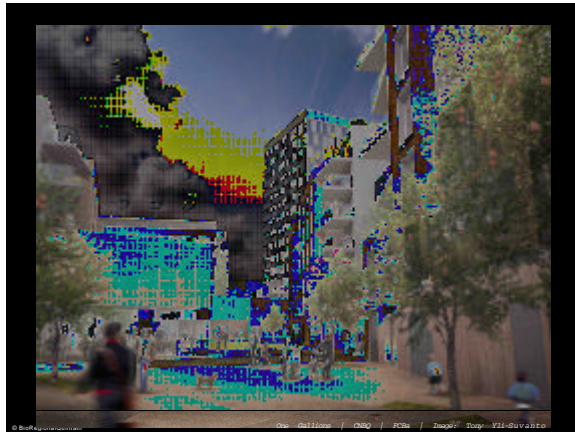
© BoffaRocklandQuinn



© BoffaRocklandQuinn



© BoffaRocklandQuinn



© BoffaRocklandQuinn

On: Galleries / CRO / PCRs / Image: Tony-Vila-Suvarito



© BoffaRocklandQuinn



© BoffaRocklandQuinn

West: McIsaac / CRO / PCRs / Image: PCRs

